

WHY COATINGS FAIL EARLY — PART 4

At Height, Steel Is Never Properly Prepared — the Man Is Saving Himself

*One hand for the work. One hand for his life. **The steel gets the spare hand.***

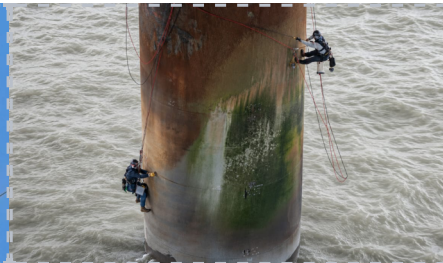
The scaffold may be there. But a man at height cannot lean into a tool, cannot grip with both hands, cannot blast. His first job is not to fall. **Prep gets what is left — and it is never enough.**

WHY PREP FAILS AT HEIGHT

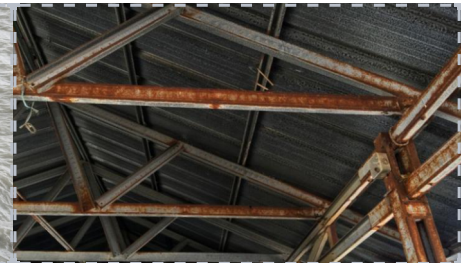
- One hand always holds on.** Descaling needs two hands and body weight. The tool skates over the rust.
- Blasting cannot go up.** Recoil, hose weight, blowback over a live plant. The best prep method never reaches the worst steel.
- Footing beats finishing.** On a swaying gallery or wind-blown tower, the mind is on balance — not on the pits.
- Short reach, shorter time.** A man clipped to one anchor cleans what he can touch. The rest gets a wipe.
- Height drains a man fast.** Prep is the tiring part — so prep is dropped first.



One hand for the work, one for his life



No footing to lean into a tool



The result: rust in every pit, coated over

Why the coating fails

Half-prepared steel means paint bonds to **rust, not metal**. The rust grows, the film lifts, the coat fails in a season — high up, where redoing it is hardest and most dangerous. Then a man goes back up to do the same compromised job again.

The answer at height — make the safe effort the effective one

Z 704 RUSTEX - NMB needs no muscle. Wipe off loose scale. Brush it on — one-handed, from a harness. The chemistry does what the worker cannot: it converts rust to the base of every pit and bonds the topcoat for years. **The light effort a man can safely give becomes prep that lasts.** See the Z 704 flyer beside this page.

PROVE IT ON YOUR HIGHEST STEEL

Pick one rusted section at height. We show how one safe hand preps it properly. Free.

sales@stanvac.com · +91-8527199811